

ASCO SERIES 300 Service Entrance Power Transfer Switch

The ASCO Service Entrance Power Transfer Switch combines automatic power switching with the necessary disconnecting, grounding, and bonding required for use as service entrance equipment. The power transfer switch meets all National Electrical Code requirements for service entrance use.

Product Features:

- Suitable for use as service entrance equipment.
- Sizes available from 70 - 3000 amps, 600 VAC, 50 or 60 Hz, single or three phase.
- 70 - 400 Ampere listed to UL 1008.
- 600 - 3000 Ampere listed to UL 891.
- Automatic Transfer Switch is listed to UL 1008 for total system loads.
- Silver plated copper ground and neutral bus with solderless screw type terminals.
- Ground fault trip protection provided on sizes 1000 amps and above.
- Available with solid or switched neutral.

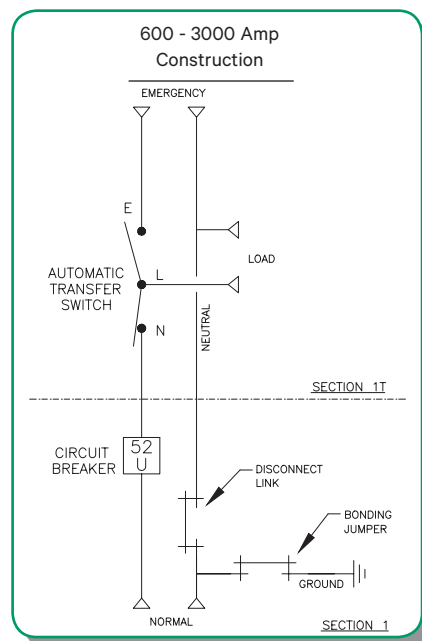
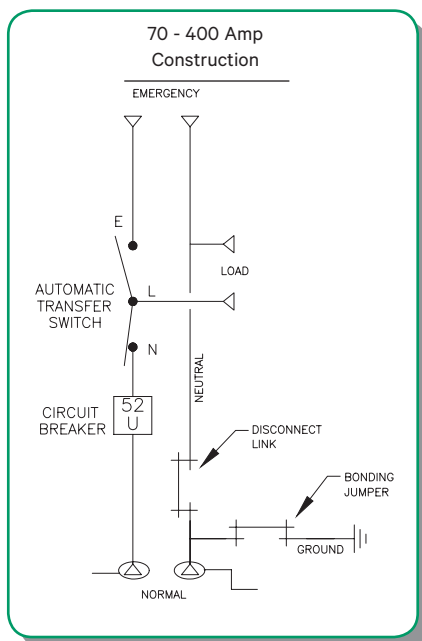


ASCO SERIES 300
SE Rated 800 amperes Type 1 enclosure



ASCO SERIES 300
SE Rated 200 amperes in Type 3R enclosure

ASCO SERIES 300SE products use two types of construction.



Products 400 amperes or less, utilize a single enclosure including a service (utility source) disconnect circuit breaker, as well as the power transfer switch, grounding and bonding provisions.

Products 600 amperes and above, utilize a multi-section switchboard construction including a service equipment section containing the service (utility source) disconnect circuit breaker, grounding, and bonding provisions. A second section contains the power transfer switch.

