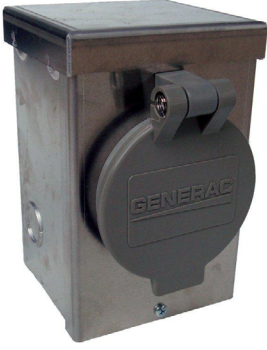


Power Inlet Boxes

**Commercial/Residential
For Portable Generators**



Models 6342, 6343, 6344



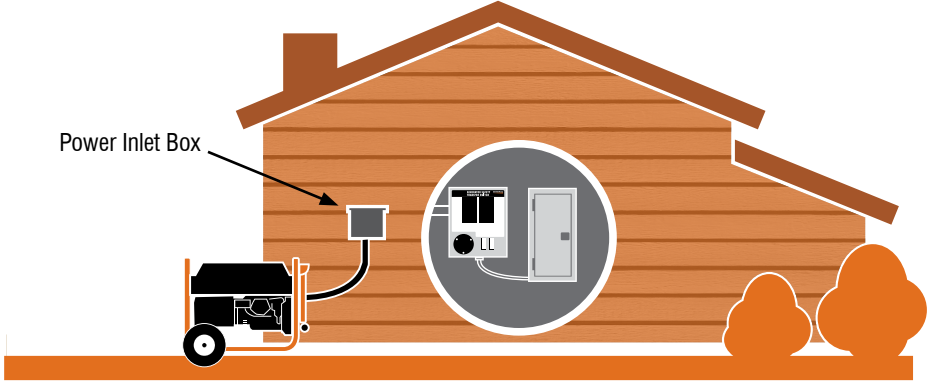
Models 6345, 6346, 6347



Models 6336, 6339, 6337,
6340, 6338, 6341

Features

- Safely connects your portable generator to your transfer switch.





Power Inlet Boxes

Specifications

Model	6342	6336	6339	6345	6343	6337	6340	6346
UPC	696471063424	696471063363	696471063394	696471063455	696471063431	696471063370	696471063400	696471063462
NEMA Configuration	L14-20	L14-20	L14-20 with spring loaded flip lid		L14-30	L14-30	L14-30 with spring loaded flip lid	
Amperage	20				30			
Voltage Rating	125/250 VAC				125/250 VAC			
Maximum Generator Size (Watts)	5000				7500			
Enclosure Material	Corrosion-resistant aluminum provides long life, and can be painted. Retains raintight rating while in use.	Non-metallic resin enclosure includes 6 knockouts for ultimate wiring flexibility. Made from durable, high-impact, glass-filled nylon. Retains raintight rating while in use.		Corrosion-resistant aluminum provides long life, and can be painted. Flip Lid covers the inlet to keep out nesting insects, dirt, moisture, and more.	Corrosion-resistant aluminum provides long life, and can be painted. Retains raintight rating while in use.	Non-metallic resin enclosure includes 6 knockouts for ultimate wiring flexibility. Made from durable, high-impact, glass-filled nylon. Retains raintight rating while in use.		Corrosion-resistant aluminum provides long life, and can be painted. Flip Lid covers the inlet to keep out nesting insects, dirt, moisture, and more.
Raintight Enclosure	•	•	•	•	•	•	•	•
Compatible Generac Generators	GP3250, LP3250, XG4000, XP4000				GP3250, LP3250, XG4000, XP4000, GP5500, GP6500E, GP7500E, XG6500, XG7000E, XG8000E, XP6500E, XP8000E			
Compatible Transfer Switches (Model #'s)	6376, 6377, 6378, 6379				6376, 6378, 6377, 6379, 6382			
Warranty	2 Year							

Model	6344	6338	6341	6347
UPC	696471063448	696471063387	696471063417	696471063479
NEMA Configuration	CS6365	CS6365	CS6365 with spring loaded flip lid	
Amperage	50			
Voltage Rating	125/250 VAC			
Maximum Generator Size (Watts)	12500			
Enclosure Material	Corrosion-resistant aluminum provides long life, and can be painted. Retains raintight rating while in use.	Non-metallic resin enclosure includes 6 knockouts for ultimate wiring flexibility. Made from durable, high-impact, glass-filled nylon. Retains raintight rating while in use.		Corrosion-resistant aluminum provides long life, and can be painted. Flip Lid covers the inlet to keep out nesting insects, dirt, moisture, and more.
Raintight Enclosure	•	•	•	•
Compatible Generac Generators	GP15000E, GP17500E, XG10000E, XP10000E			
Compatible Transfer Switches (Model #'s)	6380, 6381, 6335			
Warranty	2 Year			

Spring Loaded Flip Lid - Model 6393

Accessory	 <p>Compatible with any Generac GenTran Power Inlet Box models 6342, 6343, 6344, 6336, 6337, & 6338 Must be mounted prior to installation UL Listed</p>	
-----------	--	---

Dimensions and Weights

Model	6342	6336	6339	6345	6343	6337	6340	6346	6344	6338	6341	6347	6393
Product L x W x H in (mm)	6x5x5 (152x127x127)		5x5x7 (127x127x178)		6x5x5 (152x127x127)		5x5x7 (127x127x178)		6x5x5 (152x127x127)		5x5x7 (127x127x178)		6 x 8 (152 x 203)
Product Weight lb (kg)	3 (1.25)	2 (1)	3 (1.25)	3 (1.25)	3 (1.25)	2 (1)	3 (1.25)	3 (1.25)	3 (1.25)	2 (1)	3 (1.25)	3 (1.25)	0.5 (0.2)
Master Carton Quantity	3	3	3	3	3	3	3	3	3	3	3	3	5
Master Carton UPC	20696471063428	20696471063367	20696471063398	20696471063459	20696471063435	20696471063374	20696471063404	20696471063466	20696471063442	20696471063381	20696471063411	20696471063473	20696471063930
Master Carton L x W x H in (mm)	16.5x6.5x6 (419x165x152)			16.5x5x7 (419x127x178)	16.5x6.5x6 (419x165x152)			16.5x5x7 (419x127x178)	16.5x6.5x6 (419x165x152)			16.5x5x7 (419x127x178)	9x6x5 (229x152x127)
Master Carton Weight lb (kg)	9 (4)	6 (3)	9 (4)	9 (4)	9 (4)	6 (3)	9 (4)	9 (4)	9 (4)	6 (3)	9 (4)	9 (4)	3 (1.25)

